



PAUSE FOR A POSE: from left are Rev. M. Brown, unknown, Alfred Pedde, Alvin Klause, Glenn Rosche, Norman Rosche, Ted Klause, leaning against the log is Wm. Frank. Horses and saw, owned by Alf Pedde, were used for sawing logs into firewood at the Apostolic Church grounds near Springside, Sask.



Theodore, Bertha and Gordon



At Edward Klause home, Saltcoats
Katie & Harry, Laurena, Helen & John, Edward, Emil, Elizabeth
Eunice & Beatrice

At the Lake



Elizabeth, Martha
Min, John, Katie



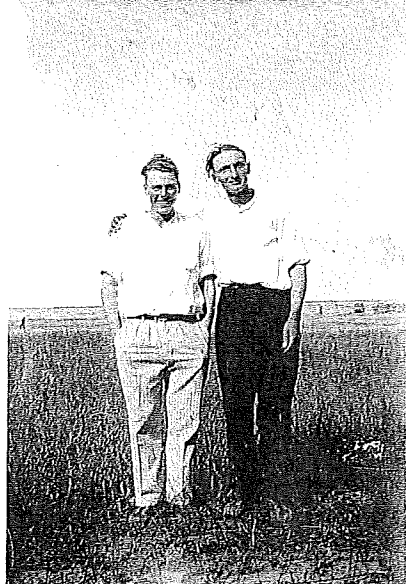
Emil, John, Harry
Eliz, Martha, Min, Katie
and children



Harry, Katie, ?, Ted, Min, Gordon Livingston



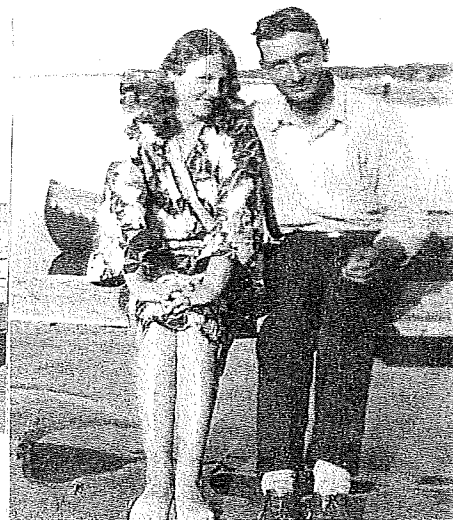
Carwash
1920's
style



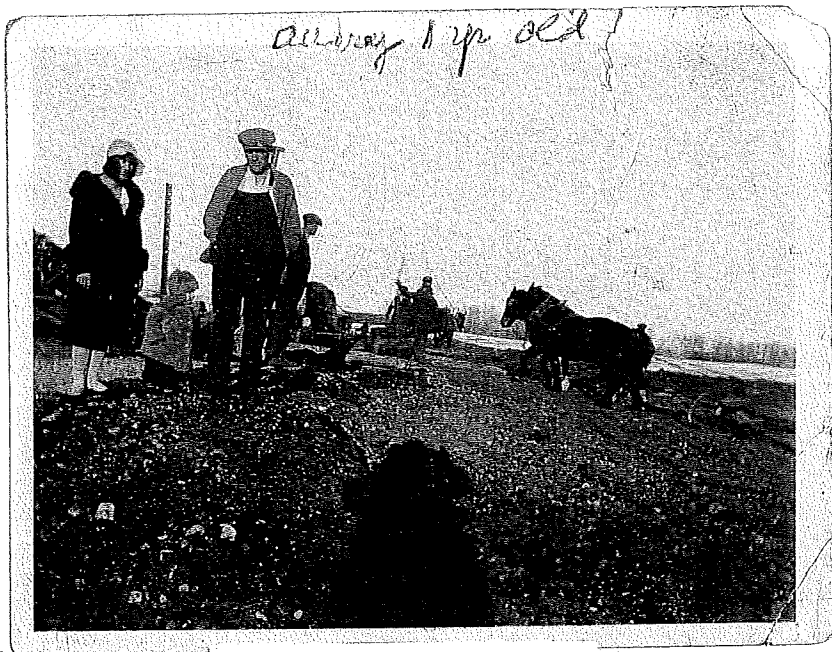
John, Alf



Gordon, Jean Dutz, Minnie,
Katie, Harry



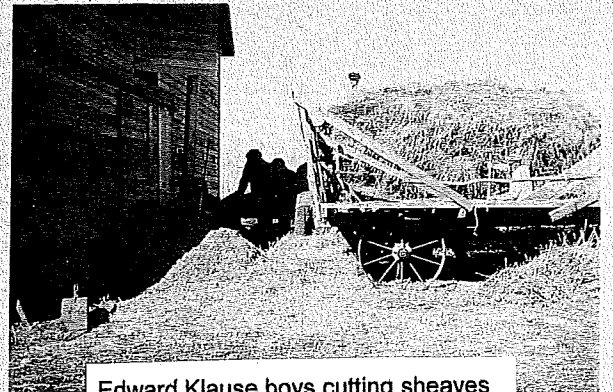
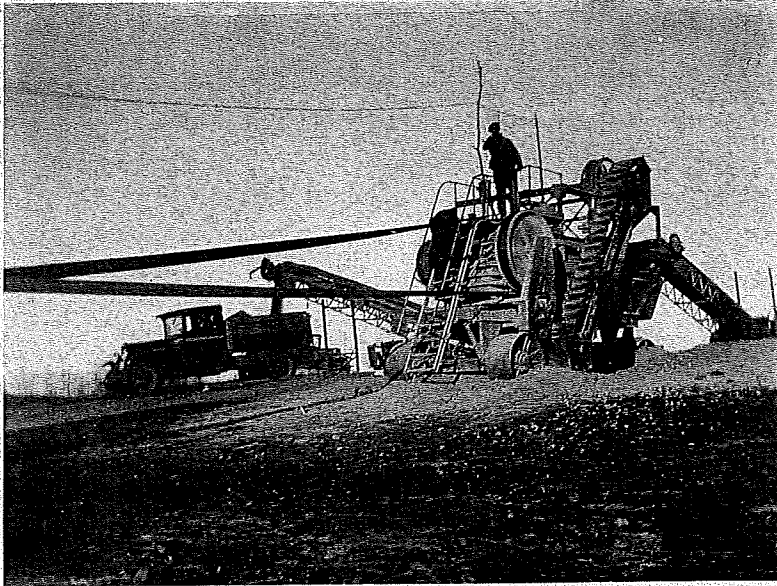
Violet & Alf
Pedde



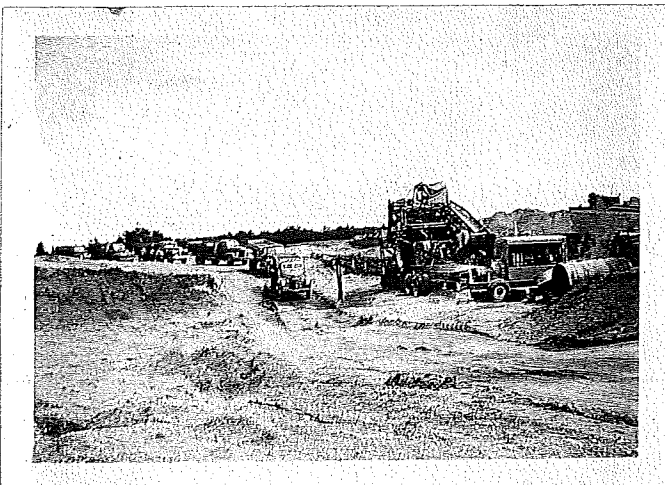
Gravel camp at Emil Klause farm
1930



Morvel



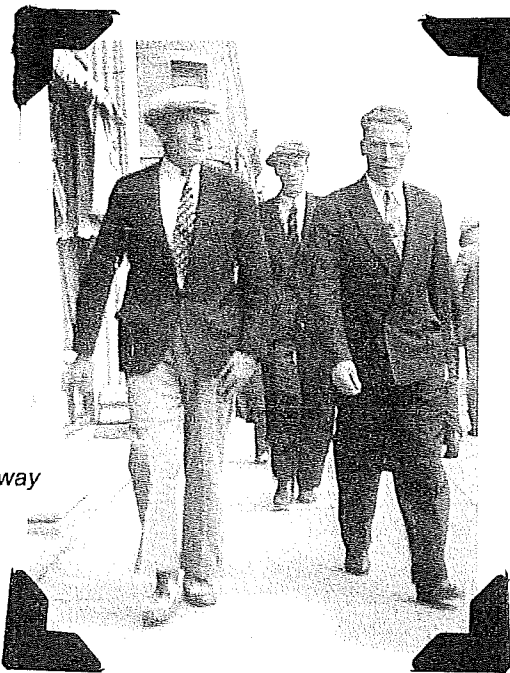
Edward Klause boys cutting sheaves
for cattle feed



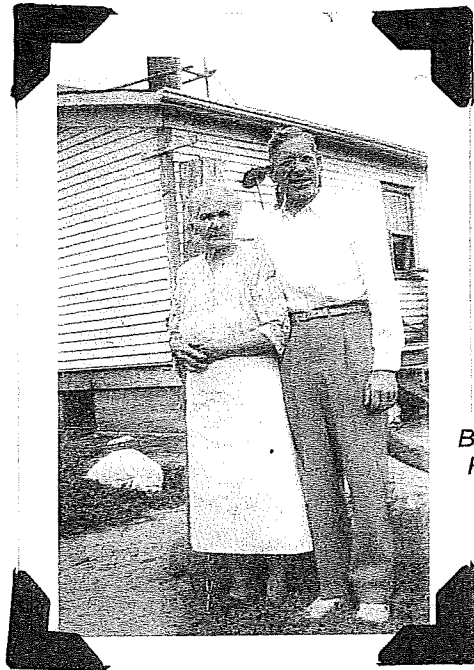
Edward Klause boys
sawing wood



Taken August, 1939
 Mervyn, Louella, Violet, Livingston boys', Mary, Bertha



Emil & John
 strutting on Broadway



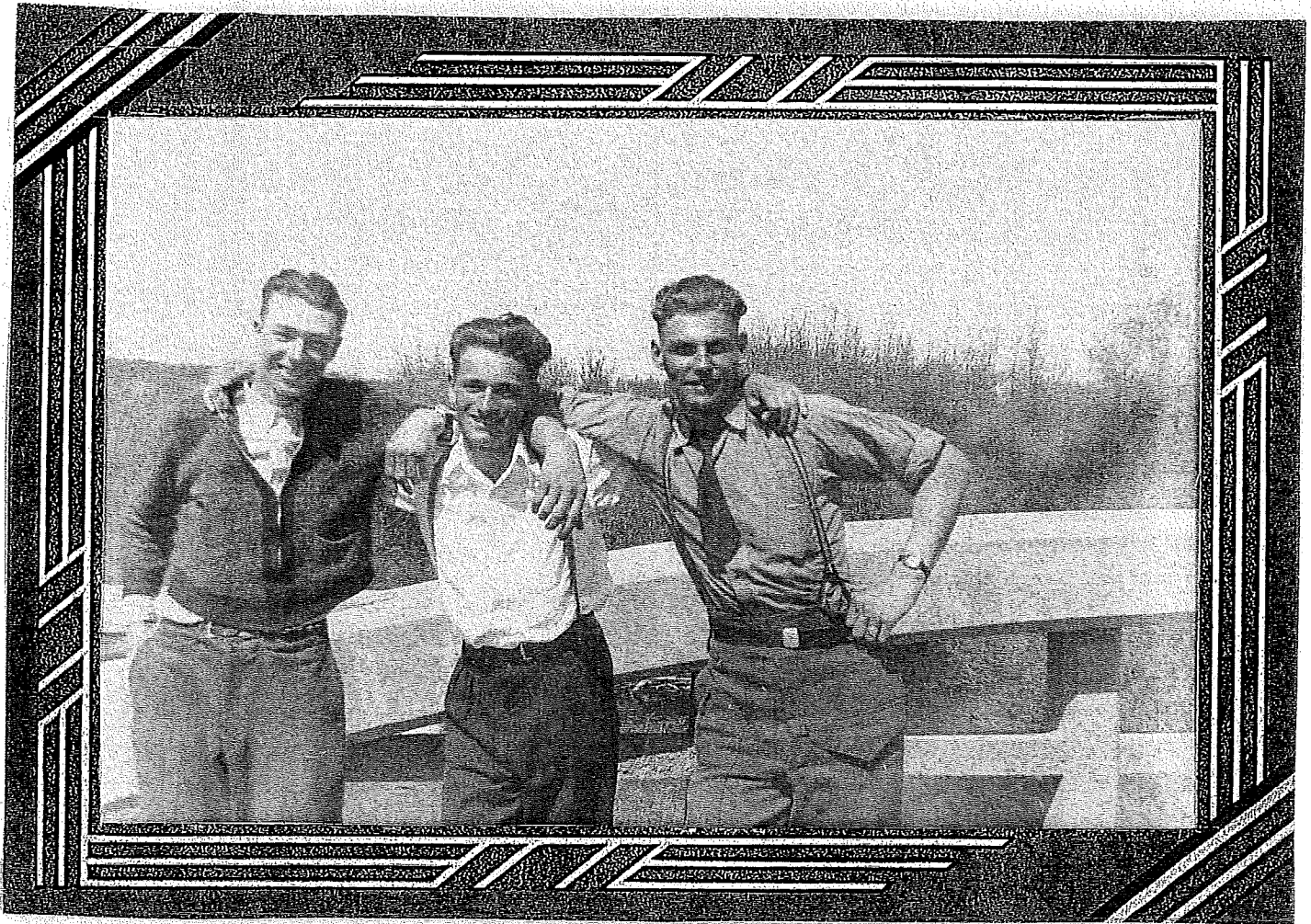
Bertha & brother,
 Robert Schultz



"Steppin' out"
 Lena Holowaty, Min, Martha, Gladi



"Cousins" A Klause Connection



Norman, Alvin and Morvel - three young and spirited Klauses at the Cussed Creek Bridge



Eunice and Louella



Norman, Gladi, Jean Turner, Bea, Alvin

"Cousins"

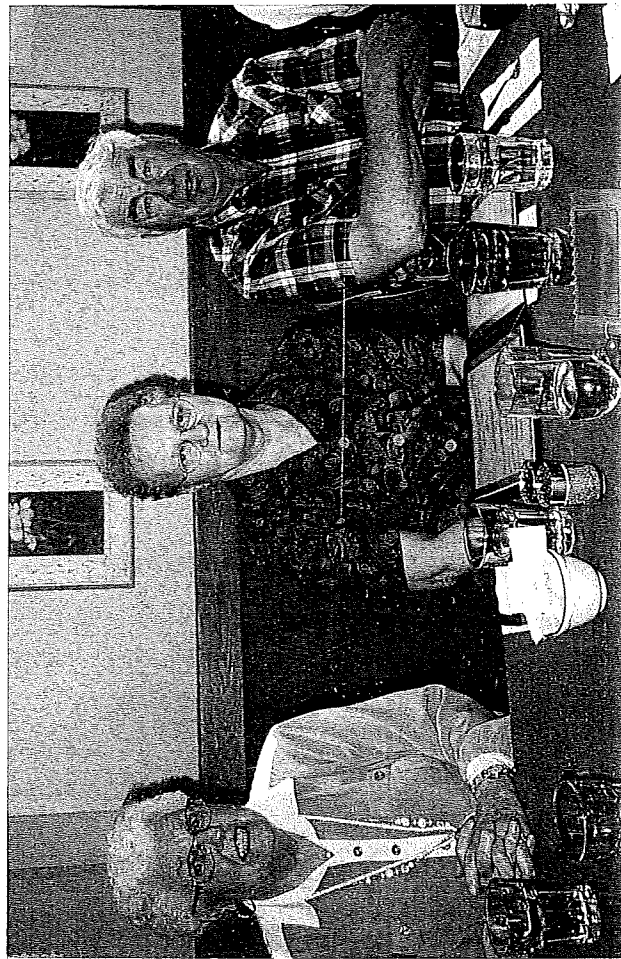


*Standing: Beverly, Bob, Arnold, Allan, Art, Alvin - Sitting, Laurena, Bernice, Norman, Gladi, Eunice
May 6, 2000*



Bob, Audrey, Eunice, Mervyn, Louella, Arnold - July 9, 1996

Yorkton, July, 2001: Gordon, Laurena, Alf, Bernice, Dorothy, Alvin, Ed, Evelyn, Norman, Cherie



Bernice, Dorothy, Art



Vancouver, January, 2001: Erv, Rachel, Bea, Laurence

Wedding Anniversaries

50th



Mary and Cleveland Livingston
with family, John, Earl, Gordon, Dorothy
1964



Wedding Anniversaries



Helen and John Klause
1988



50th

Paul and Emma Klause
1968



Harry and Katie Klause
1983

Wedding Anniversaries

50th

Alvin and Muriel Klause
(with Alice and Bob Vopni)
1998



50th

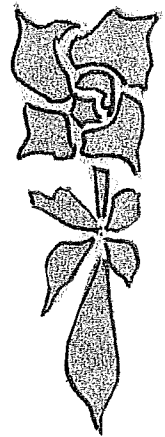
Bruce and Gladi Smith
1997



Wedding Anniversaries

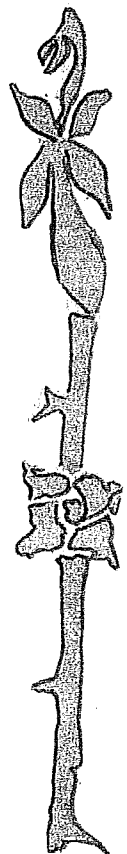
50th

Norman and Evelyn Klause
August, 2002



60th

Beatrice and Erven Shindle
October, 2002



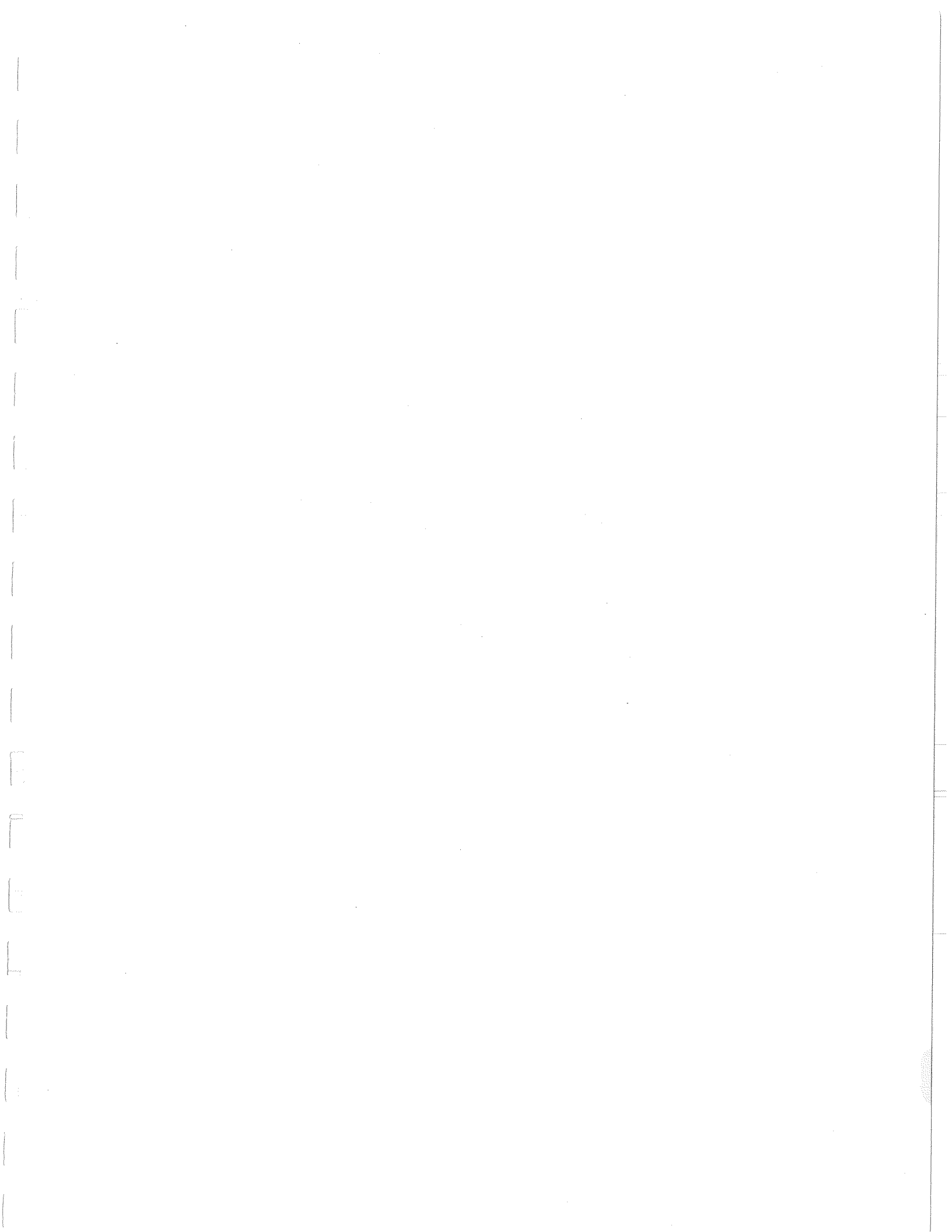
Wedding Anniversaries

50th



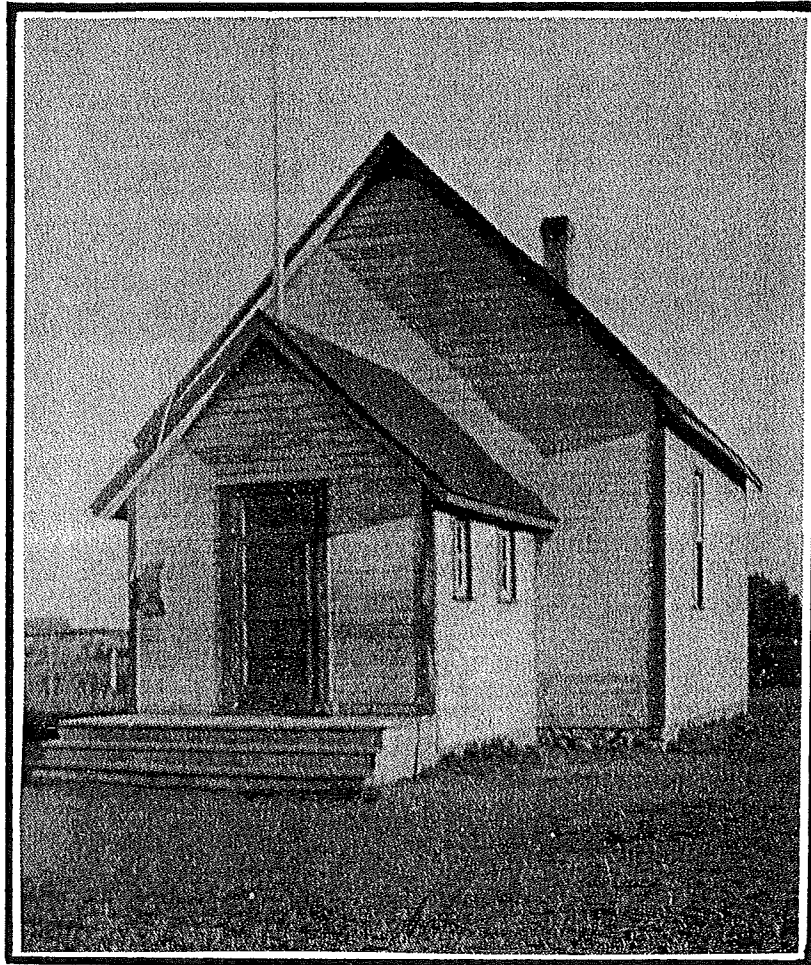
Arthur and Dorothy Klause

June, 2003



Whitesand School

1893 - 1967



Records show the original school, of log construction, was opened on April 18, 1893. The settlement was sparsely populated and schools were often closed during the winter months. After the arrival of the railroad, more settlers took up homesteads, and in 1909, a new location was chosen and built on SW 1/4 of Sec. 3, Twp. 28, Rge. 5, W 2nd. With a grant of a \$1,000.00, a large frame one room school house was constructed.

A large cast iron heater was used, with wood purchased at \$2 per cord. Pupils took turns carrying drinking water by pail from a well nearby. Enrollment was between 30 and 40 pupils, reaching 50 at one time

Forty-six years later, the ratepayers saw the need for a new school, so a 24' x 60' building was purchased from the Yorkton airport. A year later, the building was extensively remodeled, combining school and teacherage, complete with a full basement and a new heating system.

New larger school units were formed and the school was closed in 1967.

SPRINGSIDE APOSTOLIC TABERNACLE

By Louis Dutz

The Apostolic Tabernacle is situated four miles east of Springside, Sask., in the picturesque setting in the Cussed Creek Valley. The Tabernacle was constructed in 1941 during the ministry of E.L. McRae. The site saw it's beginning in the early thirties when T. Klause donated five acres of land to Rev. M.V. Brown.

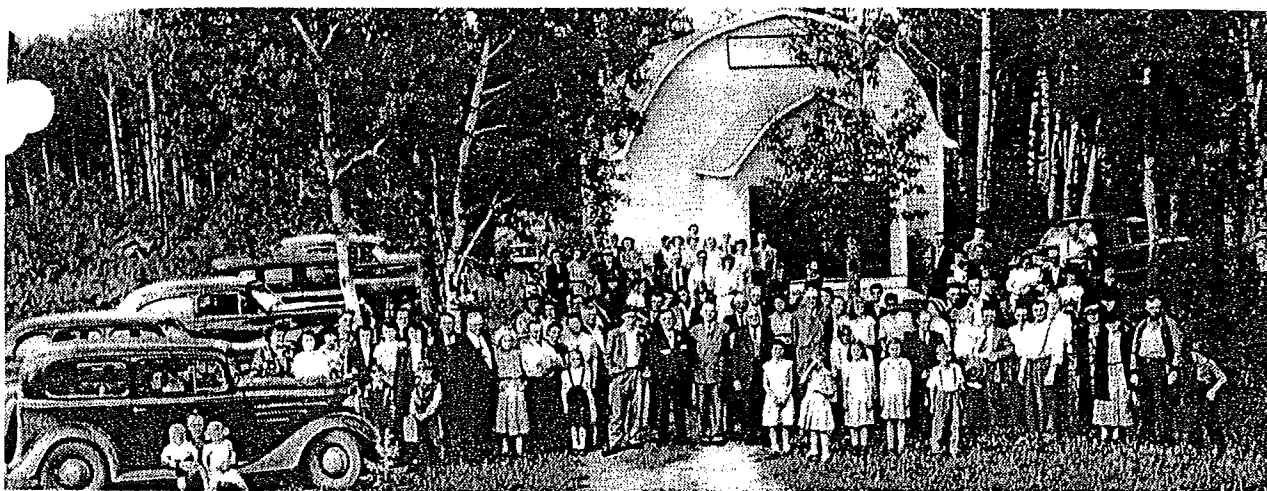
Many will remember the Revival Tent meetings, with the lively singing and the dynamic preaching. Accompanying Rev. Brown were guest artists, Howard Gay, an accomplished pianist, and Irving Mangham, vocalist.

As Rev. Brown went on to other fields of evangelism, Pastor P.J. Kylo was called to pastor the Apostolic church in Yorkton and Springside, and continued holding revival camp meetings on these grounds with further improvements to the site. In 1940, when Pastor Kylo left for Saskatoon, Pastor E.I. McRae accepted the call to Yorkton and Springside area, where he ministered for a period of six years.

The church in the valley was constructed of rough lumber, built with volunteer labor provided by friends and members of the assembly. This place of worship became a vital part of the community. Wedding ceremonies were held here and baptismal services at the river nearby.

Today, this locale serves as a summer Bible Camp, which represents Apostolic churches within a hundred mile radius, including Yorkton, Grenfell, Punnichy and Kipling. The enlarged grounds include class rooms, dining hall, dormitories, cabins, electrified camp sites, with washrooms and showers. As well, a store and bank have been added.

The church and the Cussed Creek bridge were adjacent to each other, on the farm of Theodore Klause. Alvin remembers the bridge being built. Gravel was crushed and hauled by teams of horses and 3 Diamond T trucks, of enormous 3 ton size. They carried about 3 yards of gravel. A team of horses and wagon could draw 3/4 yards. The crusher was fed by a gasoline caterpillar dozer. The crusher was driven by a steam engine. Minnie Klause boarded the truck drivers. Alvin gained some carpenter experience by helping to build the church. The cedar shingles were tedious work and took forever.



Springside Apostolic Tabernacle

